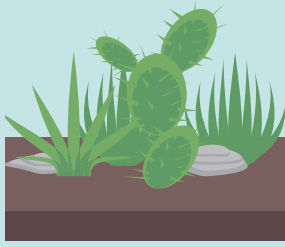


Reduce Outdoor Water Use by Practicing Water-Wise Landscaping and Irrigation

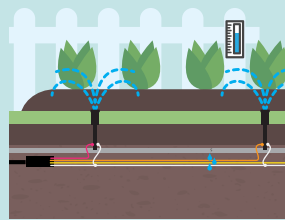
Steps

- ◆ Design a water-efficient landscape suited for your local conditions, thus conserving water and reducing waste while producing an attractive landscape.
- ◆ Use water-efficient landscape practices, such as proper mowing, mulching, and moderate fertilizing.
- ◆ Conduct regular maintenance.



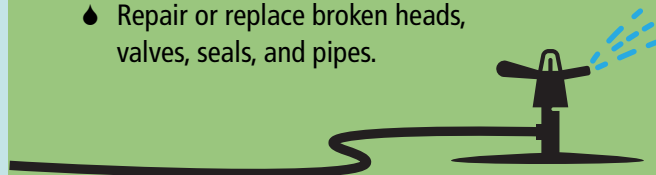
Design

- ◆ Limit turf areas to usable areas and use drought-tolerant groundcover elsewhere.
- ◆ Plant water-efficient, well-adapted, and/or native plants, shrubs, and trees.
- ◆ Utilize drip irrigation or soaker hoses in landscaping beds.
- ◆ Use sprinkler heads that produce large drops of water close to the ground.
- ◆ Choose an automatic sprinkler system with multiple scheduling options, a rain shut-off device, a water budget feature, and test functions.
- ◆ Include rainwater harvesting, where feasible, for watering the landscape. It's free, reduces dependency on potable water, and doesn't contain hard minerals.



Maintenance

- ◆ Water thoroughly but infrequently to encourage deep roots.
- ◆ Water early in the morning to reduce evaporation.
- ◆ Reduce overspray and run-off. Water only the plants, not the sidewalks and driveways.
- ◆ Mow only when grass is dry and don't cut more than one-third of its length at a time.
- ◆ Mulch or compost grass clippings. Leaving them on lawn can provide valuable nutrients.
- ◆ Use mulch in beds to retain moisture, reduce runoff and erosion, moderate soil temperatures, aid in root development, slow weed growth, and prevent soil compaction.
- ◆ Apply a thin layer of compost to the lawn in the spring after grass has come out of dormancy and actively begun growing.
- ◆ Apply fertilizer in spring and fall, if necessary, but don't overuse it.
- ◆ Aerate the lawn once a year to help keep soil healthy.
- ◆ Adjust sprinkler settings as needed. Turn off or reduce irrigation if rain is sufficient for weekly watering needs. Don't just "set it and forget it."
- ◆ Set sprinkler run time to match area watering, i.e., beds, trees, lawn, etc.
- ◆ Check sprinkler heads regularly to remove dirt and debris, look for leaks, and make sure they're working at the proper pressure.
- ◆ Repair or replace broken heads, valves, seals, and pipes.

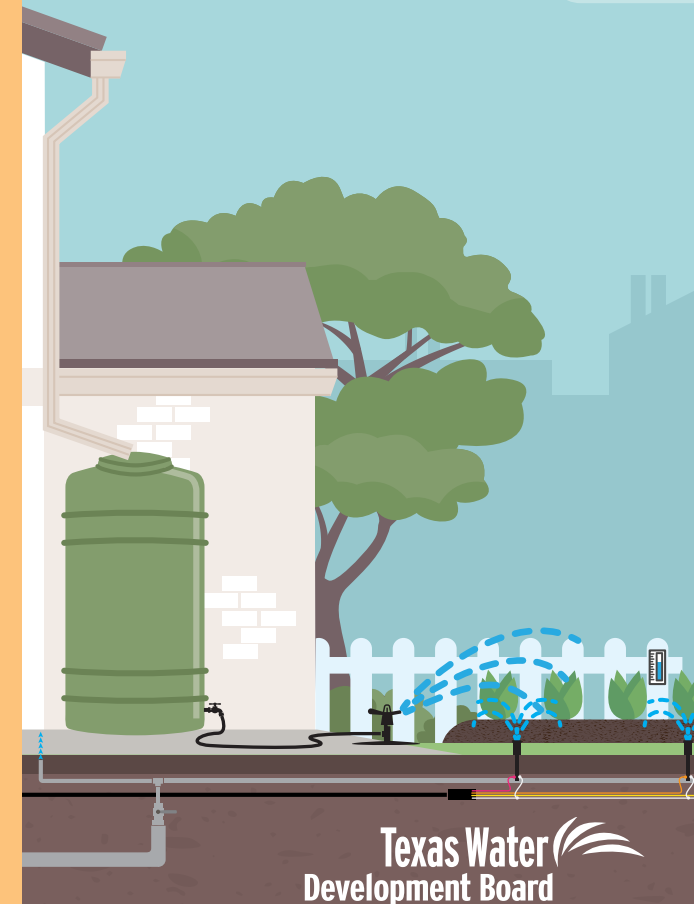


Texas Water Development Board

Texas Water Development Board
1700 North Congress Avenue
Austin, TX 78701
512-463-7847
www.twdb.texas.gov



Conserving Water Outdoors



Texas Water Development Board

Reduce Outdoor Water Use by Practicing Water-Wise Landscaping and Irrigation

Other Outdoor Tips

- ◆ Cover pools and spas when not in use to lessen evaporation.
- ◆ Backwash your pool filter only as necessary.
- ◆ Turn off decorative fountains on windy days and during drought.

Contact your county AgriLife Extension agent, water-wise landscape professional, or water supplier for recommendations of water-efficient plants that are adapted to your area of the state and for additional information on water-wise landscaping.

check irrigation settings regularly

harvest rainwater

water the plants, not sidewalk

adjust sprinklers

use mulch in landscaping beds

utilize drip irrigation

choose water-efficient or native plants

